

Silver grove school
Class - ix
Biology

Section A is compulsory. Attempt any four questions from Section B The intended marks for questions or parts of questions are given in brackets []

Section -A

Question 1 15

Select the correct answers to the questions from the given options. (Do not copy the question.

Write the correct answer only):

(i). The total number of bone in the appendicular skeleton is

(a).80. (b). 206. (c). 162. (d). 126

(ii). Which of these are the immovable joints?

(a). Bone of skull (b). Root of the teeth. (c). Between vertebra. (d). Both a and. B

(iii). Malaria is caused by

(a) Virus

(b) Bacteria

(c) Protozoa

(d) All of these

(iv). Mammary glands are the modification of

(a) Sweat gland

(b) Tear gland

(c) Oil gland

(d) Thyroid gland

(v). Tendon connects a bone with

(a) Skin

(b) Muscle

(c) Bone

(d) Both (b) and (c)

(Vi). Organelle connected with protein synthesis is

(a) Chloroplast

(b) Ribosome

(c) Pyrenoid

(d) Mitochondria

(Vii). Thumb joint is a

(a) Gliding joint

(b). Ball and socket joint

(c) Saddle joint

(d) Pivot joint

(Viii). Ribs are attached to

(a) Scapula

(b) Clavicle

(C) Sternum

(d) Ileum

(ix). The number of ATP produced during aerobic respiration is

(a) 2

(b) 36

(c) 38

(d) 40

(X). Gastric juice contains

(a) HCl and pepsin

(b) Amylopsin and pepsin

(c) Pepsin and trypsin

(d) HCl and trypsin

(XI) pollination by birds is known as

(a). Entomophily

(b). Anemophily

(c). Hydrophily

(d). Ornithophily

(xii). In man, digestion of protein starts in

(a) Buccal cavity

(b) Stomach

(c) Oesophagus

(d) Duodenum

(xiii). Production of lactic acid occurs in one of the life processes of

(a) Bread mould

(b) Yeast

(c) Mushroom

(d) Muscles

(Xiv). Which of the following components of phloem is living

(a) Phloem parenchyma

(b) Sievetube

(c) Phloem fiber

(d) Companion cell

(Xv). Which of the following is a triploblastic animal?

(a) Hydra

(b) Paramecium

(c) Earthworm

(d) Pila

Question 2 5

(i). Name the following:

(a). Three disease caused by virus

(b). Flower containing only one sex organ

(c). Joint between head of humerus and socket of shoulder.

(d). Smallest bone of the body

(e). Which enzymes digest protein?

(ii). Fill in the blank: 5

(a). Tuberculosis and AIDS are disease

(b). The moveable joint present at our elbow is called.....

(C). Excretory organs of platyhelminthes are.....

- (d). tissue connected or bind cells , tissue and organs.
 (e). is called the energy currency of the cell

(iii). Match the items given in Column I with the most appropriate ones in Column II and rewrite the correct matching pairs. 5

Column I Column II

- (a).Arrector muscle (i). Regulation of body temprature
 (b). Hair (ii). Nitrogenous waste
 (C). Receptor corpuscles (iii) Three layers
 (d). Epidermis (iv).Sense of touch
 (e). Sweat glands (v). Goose flesh

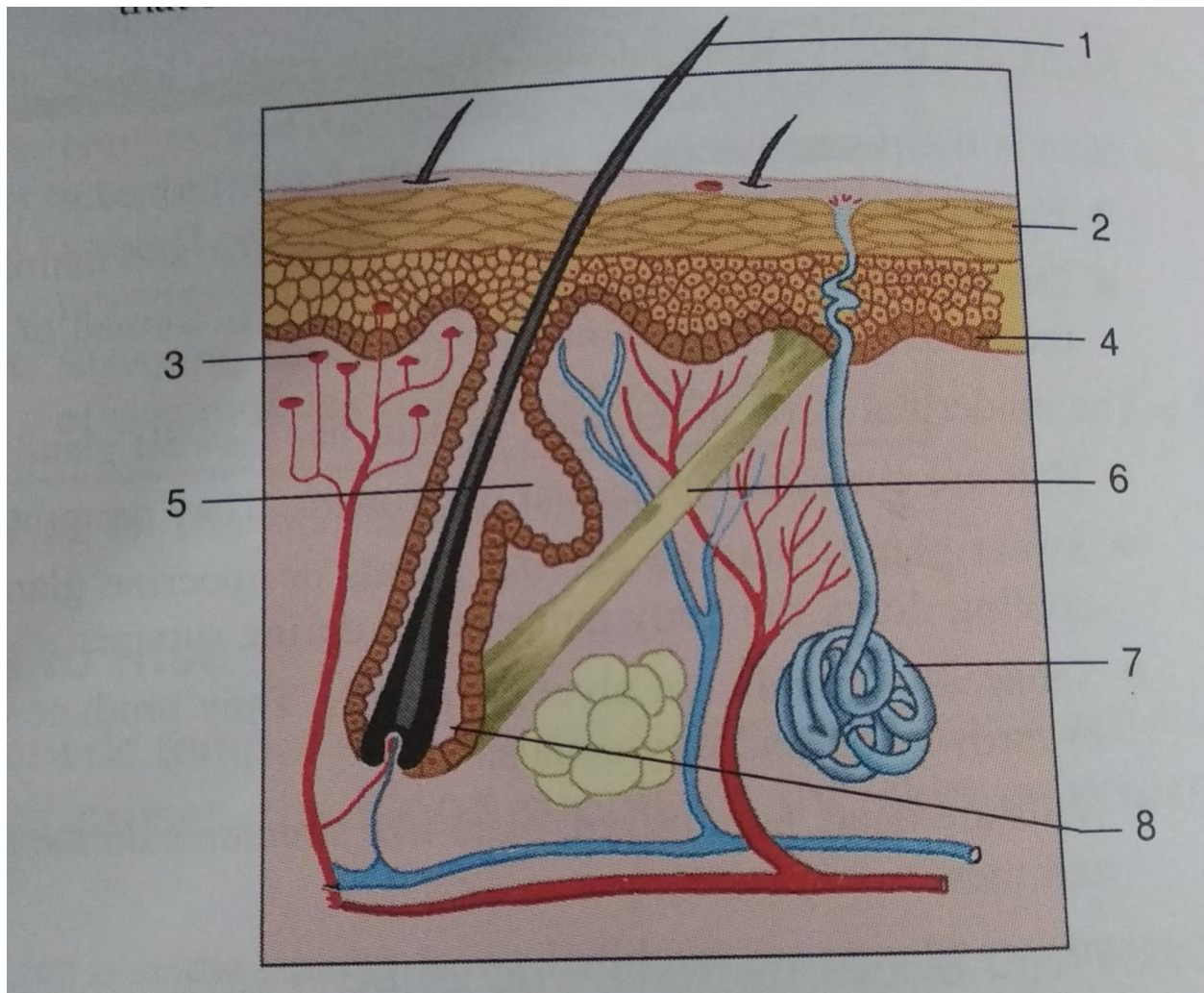
(iv). Choose the odd one out from the following terms and name the category to which the others belong: 5

- (a). Carpals, metacarpal, radius, tarsal
 (b). Stigma, Style, Filament, Ovary.
 (c). Tetanus, Typhoid, AIDS, Deptheria
 (d). Dermis, epidermis, dendrites, hair paipilla
 (e). Mitochondria, ribosomes, plastids , lysosome , cell
 (v). State the exact location of the following structures: 5
 (a). Sweat gland
 (b). Air sacs
 (C). Villi
 (d). Ovule
 (e). Meristematic tissue

Section B

Question 3

- (i). Define - Disease 1
 (ii). Give two difference between communicable and nam communicable disease 2
 (iii). Mention there function of WHO
 (Iv). Write the function of RBC. 2
 (v). Look at the figure given here and answer the questions that follow:



(a) Label the parts marked 1-8.

(b) Name the derivatives of skin.

(c) Give the role of structures marked by 3, 4, 5 and 7.

Question 4.

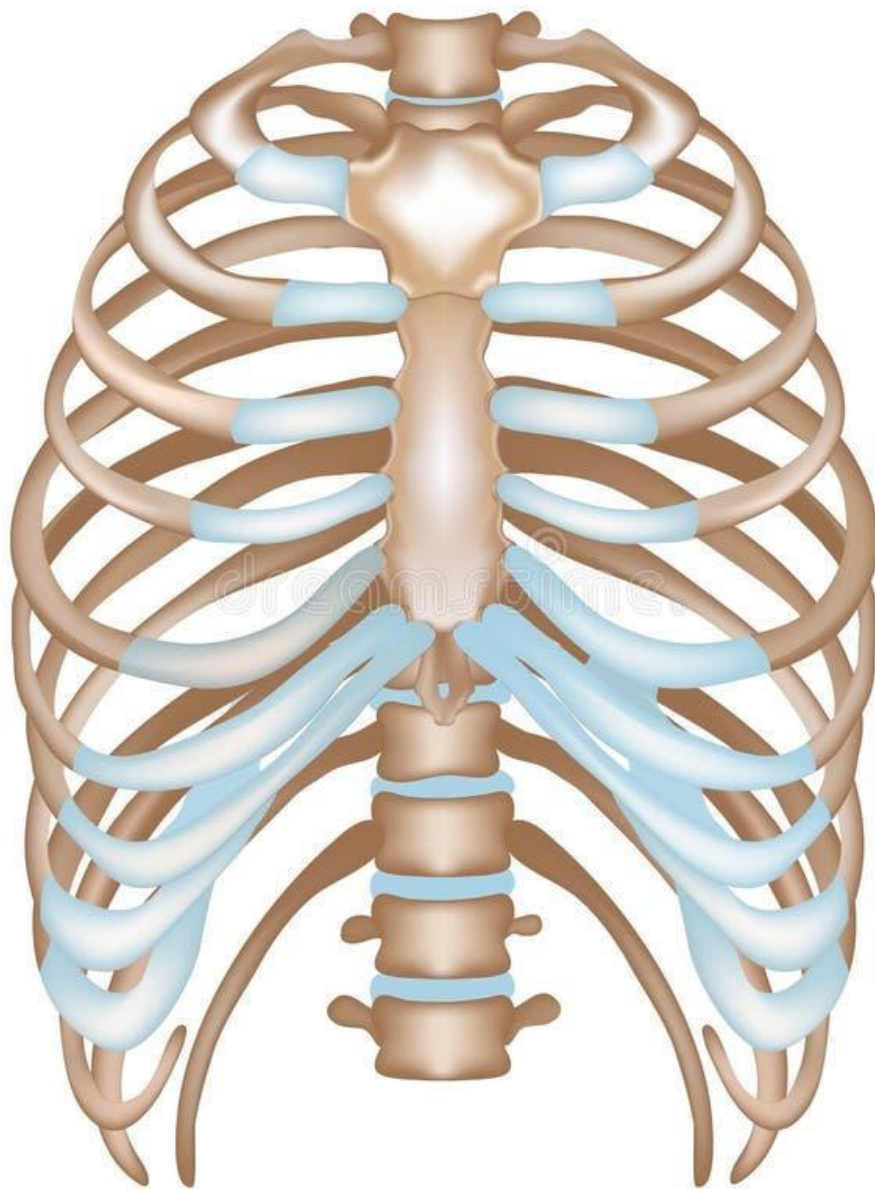
(i) Define the term skeleton 1

(ii).Give the function of skeleton. 2

(iii).what are various parts of axial skeleton.2

(iv). Give the function of rib 2

(v). Look at the diagrammatic sketch of synovial joint and answer the questions that follow.



(a). Identify the diagram

(b)How many true ribs in number?

(c) What is the role of sternum ?

Question 5.

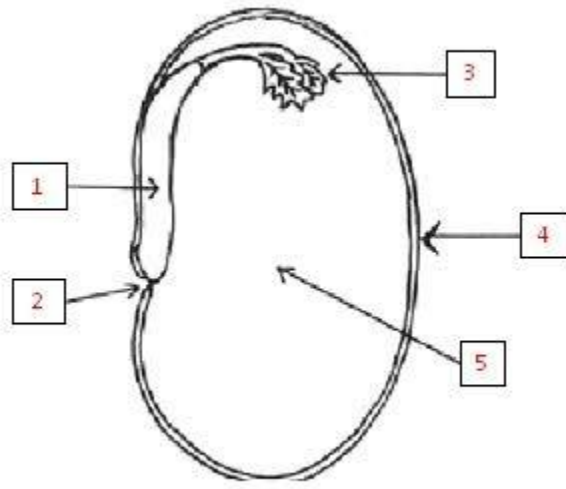
(i)Define the term fertilization. 1

(ii). What is flower what is its function. 2

(iii). Write the significance of self pollination. 2

(iv). Why Mitochondria is known as power house of cell. 2

(v). Study the figure given below and answer the following questions. 3



(a) .Identify the seed.

(b). Label the parts.

(C). Give some examples of this category of seed.

Question 6.

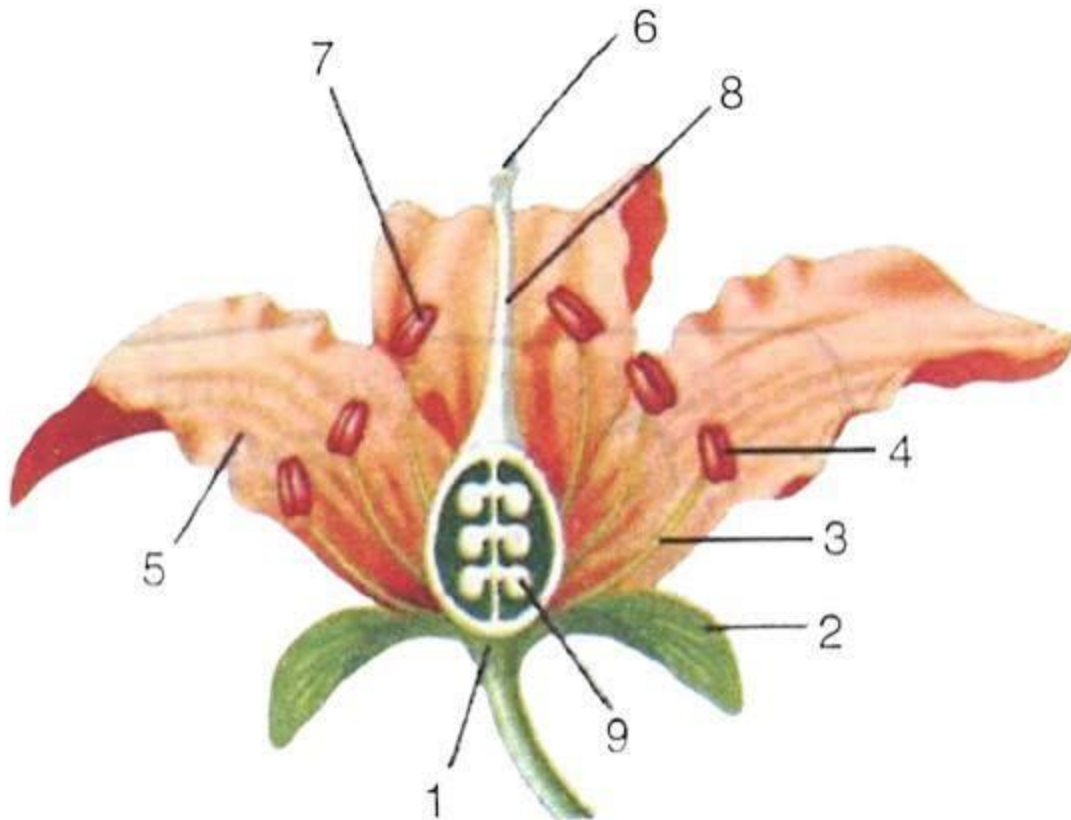
(i). What is pollen grain? 1

(ii). Write the difference between innate and acquired immunity 2

(iii). What is antibiotic give two example 2

(iv). Write any two difference between breathing and Respiration 2

(v)Study the figure given below and answer the following questions-. 3



(a) Label the parts marked 1-9.

(b) What is the function of stigma?

(c) What is the function of a pollen tube?

Question 7.

(i). Define seed germination. 1

(ii). What is micropyle? What are its function . 2

(iii). What is cross pollination , write the condition necessary for cross pollination. 2

(iv). What is corolla ? List its various functions. 2

(V). Draw a labeled diagram of Human Respiratory system.

Question 8

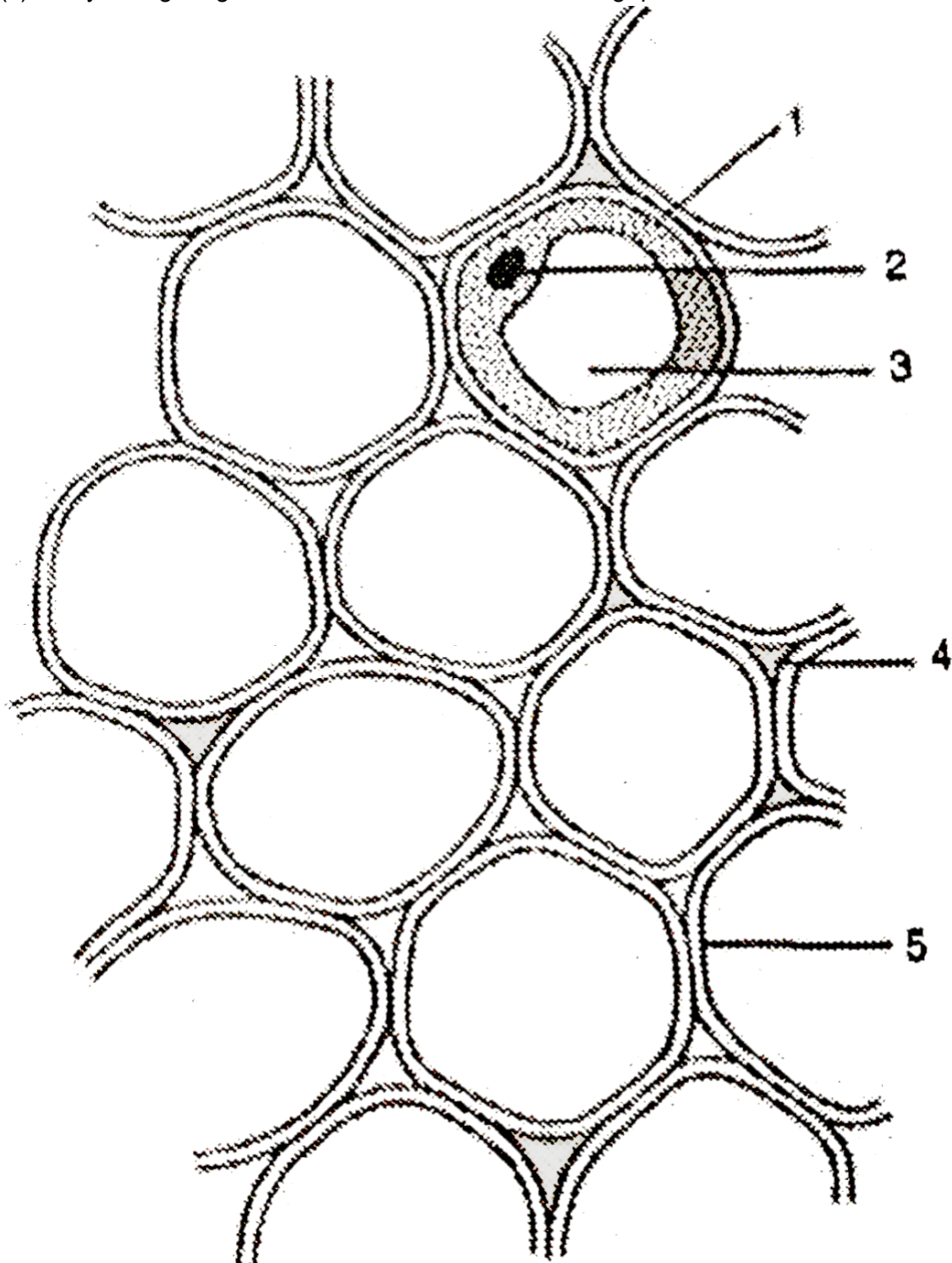
(i) Define the term Antibodies

(ii). Write the characteristics of class Mammalia.

(iii). Write the symptoms of AIDS

(iv). Write the difference between cartilage and bone.

(v).Study the figure given below and answer the following questions:



- (a) Label the parts 1- 5
- (b) Where it is located?
- (c) Mention its function.