

**Silver grove school**  
**Annual examination**  
**Class 8**  
**BIOLOGY**

**MM:- 40**

**Instruction :-**

**SECTION -A**

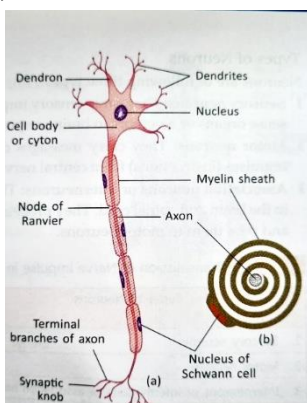
**Question 1. Choose the correct option for the following question**

**[0.5×10=5]**

- 1) Curd is obtained by the action of
  - a) bacterium
  - b) alga
  - c) fungus
  - d) virus
- 2) Apiculture is the practice of rearing
  - a) Crop farming
  - b) animal husbandry
  - c) Bees
  - d) silk moth
- 3) Influenza is transmitted by
  - a) Droplet infection
  - b) Contaminated water
  - c) Soil
  - d) Food
- 4) AIDS is caused by a
  - a) Bacteria
  - b) Virus
  - c) Plasmodium
  - d) Protozoa
- 5) This is not a Rabi crop
  - a) Wheat
  - b) Gram
  - c) Cotton
  - d) Pea
- 6) Consider the labelled diagram of a neuron below.

Which part of the neuron receives signals from other neurons and conducts them towards the cell body?

  - a) Axon.
  - b) Synapse
  - c) Dendrites
  - d) Myelin



- a) Both assertion and Reason are true
- b) Both assertion and Reason are false.
- c) Assertion is true but Reason is false
- d) Assertion is false but Reason is true

7) Assertion:- Salmonella Typhi causes typhoid.

Reason:- Salmonella is a bacteria.

8) Silver revolution refers to increased production of

- a) Fish
- b) Egg
- c) Milk
- d) Rice

9) What branch of agriculture deals with cultivation of flowers?

- a) Horticulture.
- b) Pisciculture
- c) Silviculture.
- d) Apiculture

10) Sudden and widespread occurrence of disease in an area

- a) Endemic
- b) Sporadic
- c) Pandemic
- d) Epidemic

**Question 2. Find the odd one out from the following.**

**[0.5×4=2]**

1. Proteins, antibodies ,vaccine, cancer
2. Scurvy,goitre,thalassemia,influenza
3. Attenuated , killed germ , inactivated germ, Antibiotic
4. Rice , Wheat , Maize ,Groundnut.

**Question 3. Match the following Column.**

**[0.5×4= 2]**

Column A.

Column B

- |                  |                           |
|------------------|---------------------------|
| 1) Manure        | a) Organic waste          |
| 2) Apiary        | b) Cow pox                |
| 3) Edward jenner | c) Artificial beekeeping. |
| 4) Polio         | d) Pulse polio programme  |

**Question 4. Fill in the blank's with appropriate words and complete the paragraph.**

**[3]**

The improvement in the production of \_\_\_\_\_ and other \_\_\_\_\_ during the period 1960-80 is described as \_\_\_\_\_ in India agriculture. It is known as the \_\_\_\_\_. The food production was \_\_\_\_\_ to such an extent that our country became self sufficient in food production because of development of \_\_\_\_\_ of Rice , Maize , Bajra , Sugarcane.

**Question 5. Arrange the following in a logical sequence starting from underlined word.**

**[4]**

- i) Bacteria , infection, entry , contact with contaminated product.
- ii) Culling of curd , Pasteurized milk , coagulation of milk, production of cottage cheese
- iii) Reeling , Silk moth , Eggs , cocoon , Caterpillars , Boiling of cocoon
- iv) Transplantation , Sowing , germination , Caring , harvesting

## SECTION B

Attempt all

**Question 5. Answer the following question in brief.**

**[5×1=5]**

- i) Why is organic farming better than chemical based farming?
- ii) Describe Apiculture
- iii) List deficiency symptoms of Nitrogen
- iv) Describe how high yielding varieties are developed
- v) What was green revolution?

**Question 6. Case based questions:-**

**[2×2=4]**

- i) Aruhi went on a trip to village she saw a large dairy farm with number of cows under a shed someone told her that these cows are not Indian breeds ? She now has questions answer them
  - a) What do you mean by breed?
  - b) Why Indian cows are not present in the dairy farm why foreign cows are present
  - c) What is white revolution.
- ii) Serious damage to nervous system, brain damage and seizures, adverse effects on respiratory and circulatory systems, increased chance's of heart attack and cardiac failure these are harmful effects
  - a) What do we call substances that induce sleep, feeling of well being , excitement.
  - b) What is other name for such substances
  - c) Give example of such substances .

## SECTION C

**Question 5. Answer the following in detail.**

**[ 5×3=15]**

- 1) Draw a well labelled schematic diagram of systemic circulation, and brief about it.
- 2) **Make** a flow chart on disease and its modes of transmission
- 3) **Make** a list of Microorganism and there uses in food industry
- 4) **What is a vaccine ? How is it made and why is it made explain.**
- 5) **What leads to loss in food production?**