



Silver Grove School

ANNUAL EXAMINATION (2025-26)

CLASS- VII

Set A

SUBJECT: Biology

Time: 2.00Hrs

M.M.:50M

Name: _____

Roll No.: _____

Instruction:-

- 1. The answer to the questions must be written on the paper provided separately.**
- 2. You will not be allowed to write in the first 15 minutes.**
- 3. This time is to be spent in reading the question paper.**
- 4. Attempt all questions from section A , and Section B .But Section B has internal choice.**
- 5. Marks for the question or parts are given in brackets.**

Section A

Question 1

.5x10=5

Choose the correct answers to the questions from the given options

- The functional unit of kidney is:
(a) Ureter (b) Nephron (c) Glomerulus (d) Cortex
 - Urea is produced in the:
(a) Kidney (b) Liver (c) Lungs (d) Skin
 - Cerebral hemisphere centres of:
a. Balance b.Smell c. Taste d. Thinking
 - The symptoms of allergy are:
a. Malaria b. Hay fever c. Asthma d. Itchy eyes and sneezing
 - An allergic reaction can produce urticaria a common term for urticaria is:
a. Atropic dermatitis b.Folliculitis c.Eczema d.Hives
 - the pet dander is:
a. animal hair that has been shed b. Dust that has settled on animals skin
c. Microscopic particles of animal skin d. Invisible mites that live on animals
 - The class of drugs used to treat allergic reactions is called:
a. Histamine inhibitors b. Antibiotics c Histamines. d.
- Antihistamines
- Allergies can be described as:
a. A reaction to the influenza virus during spring months.
b. The onset of a cold during spring months
c. Sneezing,itching,watery eyes,scratchy throats
d. An over reaction from the immune system to a foreign substance
 - Which one of the following is mainly associated with the maintenance of the posture?
a. Cerebrum b.Pons c. Thalamus d. Cerebellum

10. A point of contact between two neurones is termed as:

- a. synopsis b.cell function c.synapse d.Neuromotor function

Question 2

.5x5=2.5

Fill in the blanks with the suitable words.

1. Kidneys remove _____ wastes.

2. Ultrafiltration occurs in _____.

3. Allergies can cause _____.

4.An antibody is a _____ made by a body's immune system.

5.A lung condition in which air ways become narrowed is known as _____.

Question 3

.5x6=3

State whether the following statements are true or false

1. Immune cells called lymphocytes produce large number of proteins called antigens.

2. Photosensitivity is just same as sunburn.

3. The central nervous system mainly consist of brain only.

4. Motor nerve carries the message to brain.

5. function of two neurones is called a joint

6. An antibody is a protein made by body's immune.

Question 4

.5x5=2.5

Match the column A with column B

Column A

- 1.Food allergens
- 2.Sun allergy
- 3.Perennial allergies
- 4.Dermatitis
- 5.Allergic reaction

Column B

- a. Pet dander
- b. Eczema
- c. Allergen
- d. Sunburn
- e. Anaphylaxis

Question 5

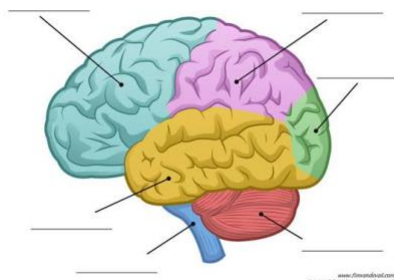
1x4=4

Choose the odd one from each of the following:

1. Pollen, Dust,Mould,Trees, Animal dander
- 2.Skin,Air,Asthma,Mouth,Drug administrative
- 3.Walking, Eating, Sneezing, Playing
- 4.Cyton, Dendron, Axon, Nerve impulse

Question 6 Label the diagram.

1x4=4



Question 7

.5x4=2

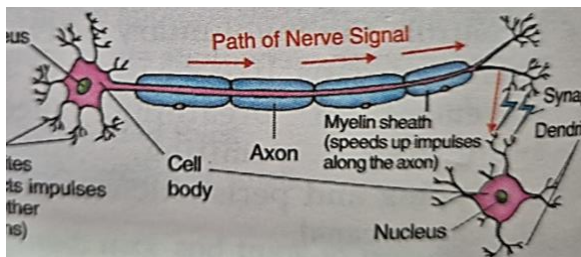
Name the following:

1. The brain is protected by the membrane.
2. A substance that causes an allergic reaction.
3. An increased sensitivity to an allergen causing dilation of blood vessels.
4. Structural and functional unit of nervous system.

Question 8

.5x6=3

Given below is the diagram of nerve cells. Read the information below the diagram and fill in the blanks:



Each nerve cell has a cell body called _____, a finger like extensions from cyton called _____ and the long wire like extension called an _____ which carries the impulses from place to place. This _____ ends in the form of _____. Dendrites of one cell almost touch _____. of the next cell. At this point there is a small gap called a _____.

Section B

Question 9

1x10=10

Short answer type questions (Attempt any 8)

1. What is meant by synapse?
2. Give the functions of cerebellum?
3. What are the most common allergens?
4. Define excretion.
5. What is an allergy?
6. What happens during an allergic reaction?
7. Define the term stimulus.
8. What is a cranium?
9. If a person experiences a sudden loss of vision. Which part of the nervous system is mostly affected?
10. Which part of the brain is primarily responsible for cognitive functions like decision making and memory?

Question 10**9****Long answer type questions (Attempt any three)**

- 1.What are the various entry routes of allergens?
- 2.Explain the different parts of brain along with their functions.
- 3.What are the symptoms of allergic reactions?
- 4.What precautions are taken by a person who is prone to allergies?
5. Describe urine formation.

Question 12**5****Project**